

- Factory Automation & Controls
- Lean Manufacturing
- Technical Problem Solving
- Professional Training Services

# EXHAUST CHAMBERS

RTT's industrial exhaust chambers are designed to efficiently remove harmful vapors and particulate. With a wide range of design configurations, our exhaust chambers can accommodate the majority of production requirements including sanding applications. The dry arrestor filters trap the airborne overspray particles before the filtered air is discharged through the exhaust systems and into the atmosphere. Air replacement units and intake chambers can be added as well as reduced air flows for automatic spray operations.

RTT's exhaust chambers are easy to install and simple to maintain. The quality and workmanship of RTT exhaust chambers allow us to offer a 5-year warranty when using high performance W-Series RP Arrestor exhaust filters manufactured by RTT.

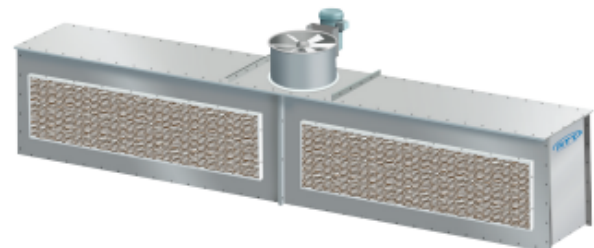


## Features

- Exhaust chambers are constructed from 18-gauge, prime quality galvanized steel. Structural steel is used to add strength and rigidity as necessary. Control panel is optional, fire control systems are to be supplied by others.
- High efficiency W-Series RP Paint Arrestor blanket media ships with every chamber for extended life, increased depth loading and holding capacity. The blanket filters are secured in place with RTT FilterLoc technology which provides a tighter seal to the chamber eliminating overspray bypass while providing quick and easy filter change outs.
- Tubeaxial exhaust fan, designed specifically for use in paint spray exhaust chambers, powers the airflow through the exhaust stack. All exhaust fans are of non-sparking construction.
- Efficient motor drive and bearings are sealed from the air stream of the exhaust. Motors are provided with each unit. Optional explosion-proof motor upgrade is required for flammable painting environments.
- Air solenoid valve interlocked to the exhaust fan and air supply for the application equipment
- RTT products are designed to meet and/or exceed all applicable OSHA and NFPA regulations.

## Options

- Air replacement units and intake chambers can be added.
- Reduced air flows for automatic spray operations.
- Control panel and other electrical components can be purchased separately.
- Explosion-proof motor upgrade.
- Design allows for conversion to enclosure.



## Contact Information

Phone: 715-220-7601

E-mail: [Info@APSfoSite.com](mailto:Info@APSfoSite.com)

## Primary Business Address

3132 Louis Ave. Ste 202

Eau Claire, WI 54703

- Factory Automation & Controls
- Lean Manufacturing
- Technical Problem Solving
- Professional Training Services

# EXHAUST CHAMBERS

## Exhaust Chamber

Model Number	Exterior Dimensions			Fan Diameter	Fan HP	SCFM @ 1/2" SP
	Width	Height	Length			
IBC-04-07-00-00-S	4'-4"	7'-2"	2'-2"	18"	.75HP	3,500
IBC-06-07-00-00-S	6'-4"	7'-2"	2'-8"	24"	1HP	5,250
IBC-08-07-00-00-S	8'-4"	7'-2"	2'-8"	24"	2HP	7,000
IBC-10-07-00-00-S	10'-4"	7'-2"	3'-2"	30"	2HP	8,750
IBC-12-07-00-00-S	12'-4"	7'-2"	3'-2"	30"	3HP	10,500
IBC-14-07-00-00-S	14'-4"	7'-2"	3'-6"	30"	3HP	12,250
IBC-16-07-00-00-S	16'-4"	7'-2"	3'-6"	30"	5HP	14,000
IBC-18-07-00-00-S	18'-4"	7'-2"	4'-6"	36"	5HP	15,750
IBC-20-07-00-00-S	20'-4"	7'-2"	4'-6"	36"	5HP	17,500
IBC-04-08-00-00-S	4'-4"	8'-2"	2'-2"	18"	1HP	4,000
IBC-06-08-00-00-S	6'-4"	8'-2"	2'-8"	24"	1.5HP	6,000
IBC-08-08-00-00-S	8'-4"	8'-2"	2'-8"	24"	3HP	8,000
IBC-10-08-00-00-S	10'-4"	8'-2"	3'-2"	30"	3HP	10,000
IBC-12-08-00-00-S	12'-4"	8'-2"	3'-2"	30"	3HP	12,000
IBC-14-08-00-00-S	14'-4"	8'-2"	3'-6"	30"	5HP	14,000
IBC-16-08-00-00-S	16'-4"	8'-2"	4'-6"	36"	5HP	16,000
IBC-18-08-00-00-S	18'-4"	8'-2"	4'-6"	36"	5HP	18,000
IBC-20-08-00-00-S	20'-4"	8'-2"	4'-6"	42"	5HP	20,000
IBC-04-10-00-00-S	4'-4"	10'-2"	2'-2"	18"	1.5HP	5,000
IBC-06-10-00-00-S	6'-4"	10'-2"	2'-8"	24"	2HP	7,500
IBC-08-10-00-00-S	8'-4"	10'-2"	3'-2"	30"	3HP	10,000
IBC-10-10-00-00-S	10'-4"	10'-2"	3'-2"	30"	3HP	12,500
IBC-12-10-00-00-S	12'-4"	10'-2"	3'-2"	30"	5HP	15,000
IBC-14-10-00-00-S	14'-4"	10'-2"	4'-6"	36"	5HP	17,500
IBC-16-10-00-00-S	16'-4"	10'-2"	4'-6"	42"	5HP	20,000
IBC-18-10-00-00-S	18'-4"	10'-2"	4'-6"	42"	5HP	22,500
IBC-20-10-00-00-S	20'-4"	10'-2"	4'-6"	42"	7.5HP	25,000
IBC-04-12-00-00-S	4'-4"	12'-2"	2'-8"	24"	1.5HP	6,000
IBC-06-12-00-00-S	6'-4"	12'-2"	2'-8"	24"	3HP	9,000
IBC-08-12-00-00-S	8'-4"	12'-2"	3'-2"	30"	3HP	12,000
IBC-10-12-00-00-S	10'-4"	12'-2"	3'-2"	30"	5HP	15,000
IBC-12-12-00-00-S	12'-4"	12'-2"	4'-2"	36"	5HP	18,000
IBC-14-12-00-00-S	14'-4"	12'-2"	4'-6"	42"	5HP	21,000
IBC-16-12-00-00-S	16'-4"	12'-2"	4'-6"	42"	7.5HP	24,000
IBC-18-12-00-00-S	18'-4"	12'-2"	4'-6"	42"	7.5HP	27,000
IBC-20-12-00-00-S	20'-4"	12'-2"	4'-6"	42"	10HP	30,000

## Exhaust Bench

Model Number	Exterior Dimensions			CFM @ 1/2" SP	Fan Diameter	Fan HP	Filters Exhaust	Manometer
	Width	Height	Length					
EB-12-S	12'-0"	3'-2"	2'-4"	5,000	18"	1.5HP	7	Yes
EB-15-S	15'-0"	3'-2"	2'-4"	5,000	18"	1.5HP	8	Yes

### Contact Information

Phone: 715-220-7601

E-mail: [Info@APSfoSite.com](mailto:Info@APSfoSite.com)

### Primary Business Address

3132 Louis Ave. Ste 202

Eau Claire, WI 54703